



Birth to Five Illinois & Every Child Ready Chicago Kick-off Event

April 6, 2022



Welcome!

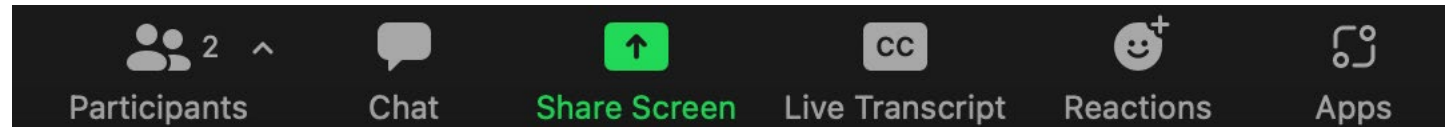
Thank you for attending the City of Chicago Kick-Off Event!

We will be offering live Spanish interpretation.

This session will be recorded and shared publicly.

Click on CC/Live Transcript for Closed Captioning.

Q&A last 30 minutes. Please use the Chat Box.



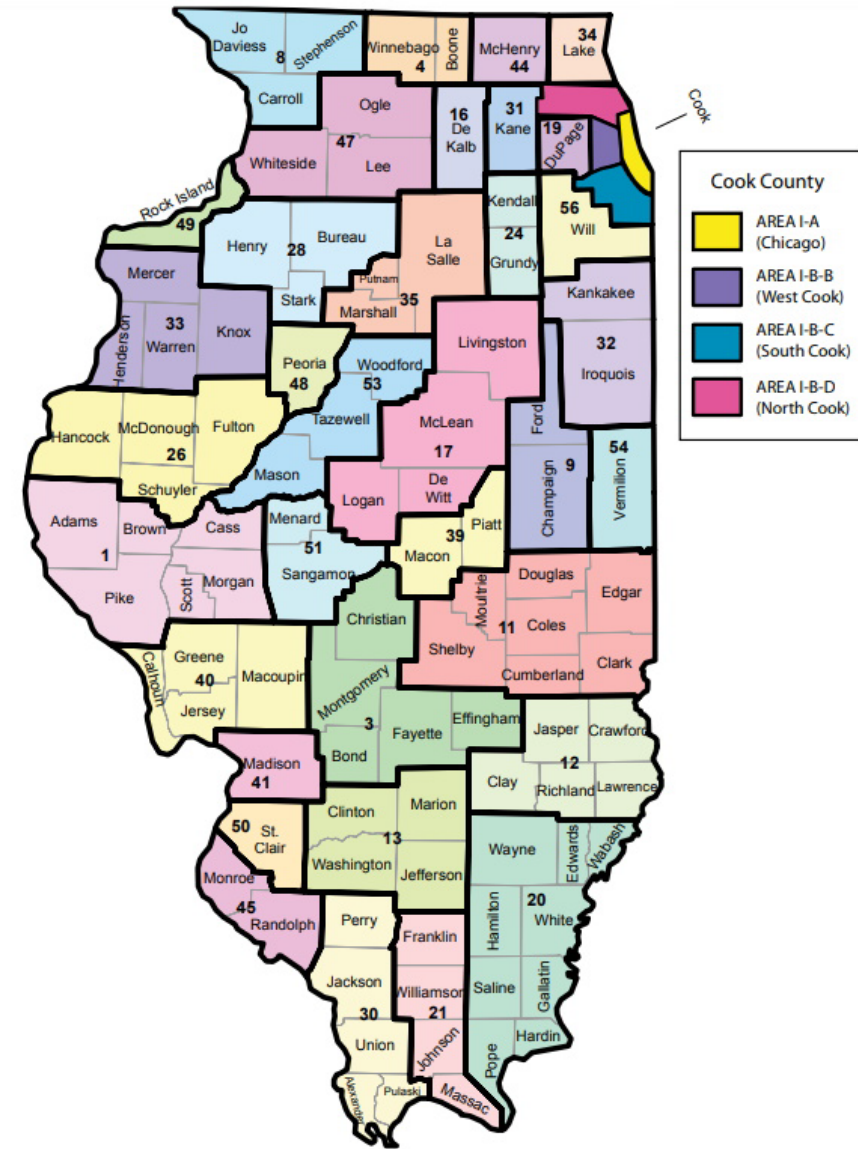
Agenda

- Overview of Birth to Five Illinois, Every Child Ready Chicago (ECRC), and why we are integrating
- How ECRC will adapt based on this partnership
 - Membership
 - Interest Form/Equitable Selection Process
- Framework for the Chicago Family Council
- Introduce the Chicago Early Childhood Integrated Data System (CECIDS)
- Questions & Answers (Q&A)



Birth to Five Illinois

- In partnership with INCCRRA
- 39 Action & Family Councils that operate independently but share existing ISBE Regional Offices of Education boundaries
- Efforts aim to match policy making & funding distribution at the state level with local needs
- Dedicated staff in each region



Our State Team



SHE/HER

Cicely Fleming

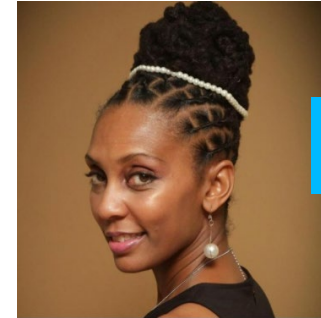
STATE DIRECTOR



SHE/HER

Sonja Clark

DIRECTOR OF
OPERATIONS



SHE/HER

Dena Chapman

FAMILY & COMMUNITY
ENGAGEMENT MANAGER



HE/HIM

David Quiroz

FAMILY & COMMUNITY
ENGAGEMENT COORDINATOR



THEY/THEM

Jes Scheinplug

PROJECT
COORDINATOR



SHE / HER

Maggie Koller

COMMUNICATIONS
MANAGER



SHE/HER

Angela Hubbard

GRANTS & RELATIONSHIPS
MANAGER



SHE/HER

Karen M. Nunnally

AREA 1

Every Child Ready Chicago

- **Purpose:** An initiative to build a coherent prenatal to five system that provides equitable access to the supports and services families need.
- **Process:** With support from School Readiness Consulting and Start Early, the Mayor's Office convened a working group in a series of meetings representing a broad base of stakeholders to:
 - Identify and build existing efforts underway
 - Collectively identify strategic priorities
- **Goal:** Co-design a strategic plan for the implementation of a strong system that ensures equitable access to quality services and positive outcomes for all children.



Alignment

To maximize impact and collaboration, the ECRC working group will expand its membership to serve as the Birth to Five Action Council for the City of Chicago.



Shared Values

Birth to Five Illinois Values/Goals

- **Racial Equity:** In an effort to move our Early Childhood Education and Care (ECEC) systems to one where race is no longer a predictor of a child's success, we will address barriers that have limited access to high-quality services for minoritized children in every corner of our State.
- **Family Voice:** Through this transformation centered on authentic family and community engagement, we will address the inequitable distribution of resources and services and rebuild our State's Early Childhood Education and Care (ECEC) systems.
- **Collective Impact:** Birth to Five Illinois will build a system that harnesses knowledge directly from families and mobilizes decision-makers to ensure new and/or expanded services are created to meet community needs and directly influence policy/funding at the local, regional, and state level.



ECRC Values

- **Equity:** Prioritizing resources for families who have been most impacted by systemic inequities to create the conditions in which child outcomes are no longer predicted by race, zip code, or other social factors.
- **Diversity & Inclusiveness:** Ensuring that stakeholders across all roles, identities, and interests have a voice in decision-making.
- **Transformation:** Partnering with families and communities to re-imagine a stronger, more equitable early childhood system that brings lasting change.
- **Transparency:** Building trust through communication and a clear decision-making process that prioritizes children and families.
- **Accountability:** Establishing clear roles, timebound actions, and measurable benchmarks as evidence of progress to be shared with the community.



Shared Visions

If Birth to Five...

Reimagines a more **equitable** Early Childhood Education and Care (ECEC) system that ensures **family and community voice is centered and prioritized** at every level of decision-making in Illinois.



Then...

Every child in Chicago can thrive within **well-supported families, effective programs, and well-resourced communities** so they grow strong, live joyful lives, and realize their greatest potential.



Why ECRC?

- Birth to Five is aligning with organizations already working regionally—ECRC is that entity for Region I-A/City of Chicago
- Facilitate greater cooperation and coordination between city and state
- Establish continuity for the work by investing state and city resources to lift-up shared priorities
- Building on already existing local collaborations in the City of Chicago



Action Council Membership

Requirements & Commitments

- Must live, work, or receive early childhood services in the City
- All members serve on a voluntary-unpaid basis except for family/caregiver representatives who will be compensated for their participation
- Actively participate in the meetings; we seek action-oriented “doers” who commit to attending meetings and reviewing pre-read materials
- Uplift recommendations: leverage resources, connections, and influence to address issues
- Disseminate information to respective communities and networks
- Serve as an ambassador for the work of the Council and promote the vision
- Leverage stakeholder networks to gather information and feedback from directly impacted groups to inform planning efforts



Expanding ECRC

Current Working Group Members

- Child Care Resource and Referral (CCR&R)
- Center-based child care
- Professional development for the early childhood workforce
- Family/Caregiver Representatives
- Data and Research
- Philanthropy
- Government Agency Representatives (DCFS, CDPH, IDHS, CPS, DFSS, ISBE, etc.)
- Advocacy organizations
- Family Child Care Network



Expanding ECRC (cont.)

Expanding Membership to Include

- Parents/Family Members - 2 additional
- Early Childhood Collaboration Members
- Home Visitor/Early Intervention Providers
- CPS Office of Diverse Learner Supports and Services & representative from the Office of Language and Cultural Education
- Family Child Care Providers
- Business Owners/Chamber of Commerce Members

Selection Process

- Complete an Interest Form
- New members selected by Mayor's Office/Birth to Five Team
- Using an equity centered matrix to ensure diverse, representative Council membership
- Evolving process as we learn and grow together



Year One Priorities

- **Coordinate:** Build an infrastructure to advise ECEC policy
- **Align:** Establish methods to document supply/demand data
- **Plan:** Better prepare communities for expansion of ECEC by improving data, understanding preference, increasing program coordination, funding & quality standards
- **Engage:** Authentic family voice in the planning & policy design





Family & Community Engagement



Chicago Family Council

Done to Date

- In partnership with COFI, Illinois Action for Children, and Start Early
- Meeting since September 2021
- Crafting recommendations for a Family Council
- Decision-making by consensus
- Have reviewed several initiatives in family engagement, including:
 - Raising Illinois
 - Family Advisory Committee of the Early Learning Council



Chicago Family Council (cont.)

Future Work with Birth to Five Illinois

- Serve as an advisory committee to the Action Council
- Share critical input
- Give feedback
- Advocate for family needs
- Identify gaps
- Raise issues of concern from the community



Commitments: Chicago Family Council

- Diverse family representation
- Paid leadership role
- 1-2 year commitment
- Willingness to share lived experiences





Chicago Data Overview



WHAT IS EARLY CHILDHOOD LIKE IN THE CITY?

THERE ARE

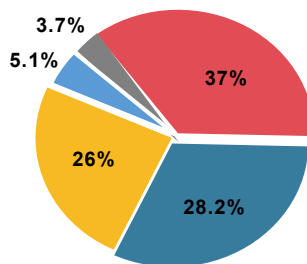
193,068



Data show the City is home to a rich diversity of children and families across **race and ethnicity**...

Percent of Children 0-5 in Chicago by Race/Ethnicity ⁴

- 37.0% Latinx
- 28.2% Black
- 26.0% White
- 5.1% Asian
- 3.7% Other Race/Ethnicity



About **one-third** of Chicago residents speak a language other than English at home

Spanish as the primary language spoken Additional languages spoken include Russian/Polish/ Slavic languages, other Indo-European languages, and Chinese (including Mandarin and Cantonese).⁷

CHICAGO IS HOME TO...

More than 1/3 of the Latinx children children ages 0-5 that live in the state
Nearly 1/2 of the Black children children ages 0-5 that live in the state⁶

WHAT IS EARLY CHILDHOOD LIKE IN THE CITY?

25.5% OF CHILDREN AGES 0-5 IN CHICAGO LIVE IN POVERTY

Young Black and Latinx children in Chicago are more likely to live in poverty than their White and Asian counterparts:

42.7% of Black children ages 0-5 live in poverty

28.5% of Latinx children ages 0-5 live in poverty⁹

THE MEDIAN INCOME IS **\$58,247**

Which is less than the overall median income in IL of **\$69,212**¹⁰

36% OF CHILDREN LIVE IN HOUSEHOLDS WITH A HIGH HOUSING COST BURDEN

It means almost 1/3 of income is spent on rent, mortgage or other related expenses, which also means less to spend on other basic and child care needs.¹¹



ALMOST **40%** of WOMEN DO NOT RECEIVE adequate prenatal care

Rate of pregnancy-associated deaths is nearly six times higher for black women in Chicago than their white counterparts, despite similar birth rates.¹³

APPROXIMATELY **6,000**

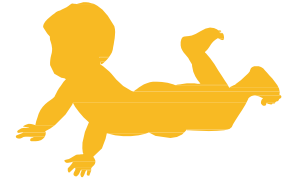
CHILDREN UNDER AGE 5 ARE WITHOUT HEALTH INSURANCE¹²

THE INFANT MORTALITY RATE IN CHICAGO IS

7 per 1,000 births

The mortality rate for babies born to Black women is approximately three times as high as those born to White women.

13 PERCENT OF BABIES ARE BORN TOO EARLY



9.5% OF BABIES ARE BORN WITH LOW BIRTH WEIGHT¹⁵

Both can potentially impact children's healthy growth and development.

ECE WORKFORCE

CHICAGO HAS A HIGHER RATE OF STAFF WITH COMPLETION OF COLLEGE DEGREE THAN THE REST OF THE STATE

85% of Licensed Center Administrators
74% of Licensed Center Teachers
40% of Licensed Center Assistant Teachers
40% of Family Child Care Owners/Providers

Fast Facts

- Licensed Center-based sites & capacity: 448/ 34,151
- Licensed Family Child Care Homes sites & capacity: 992 / 10,654
- CPS has the capacity to serve 15,500 students in 775 full-day Pre-K classrooms

Compared to the rest of the state, Chicago has the greatest racial diversity among teaching staff in licensed center-based childcare:

- 43% Black
- 30% Hispanic/Latinx
- 19% White

And the highest rate of bilingualism among teachers

- **18.2%** of Licensed Center Teachers
 - **23.7%** of Licensed Family Child Care Providers
- Report their primary language as something other than English

35.9% of Licensed Center Teachers
and
28.6% of Licensed Family Child Care Providers
Identify as bilingual

Still, the Chicago Early Childhood Workforce Partnership Employer Council estimates Chicago needs 3,000 new and 1,000 upskilled early childhood educators by 2024.



CECIDS

Chicago Early Childhood
Integrated Data System

Orientation

April 2022

What is CECIDS?



- CECIDS stands for Chicago Early Childhood Integrated Data System
- It is a cloud-based platform for efficient, timely analysis and reporting of integrated EC data
- It builds on successes of Data Warehouse and CPS/DFSS data integrations
- It relies on an innovative Public/Private Governance model involving multiple “Data Governors”
- It is an ongoing effort that will help ensure broader use of early childhood data – from parents to providers to advocates...and ultimately, you!

Why CECIDS: Using data to improve systems for children in their communities



For Children

We need to more closely target childhood outcomes and the prerequisites that go into achieving those outcomes

- We know we have **access deserts** in certain neighborhoods, especially for infant / toddler programming
- We know that Chicago's early childhood system 'at large' prepares **only 28% of children** adequately for school*
- Despite millions in public dollars spent annually for early childhood in Chicago, **there is no consistent, actionable measure of quality**
- There is an early childhood **teacher shortage**
- **Parents do not have necessary tools** to decide what program is best for their child

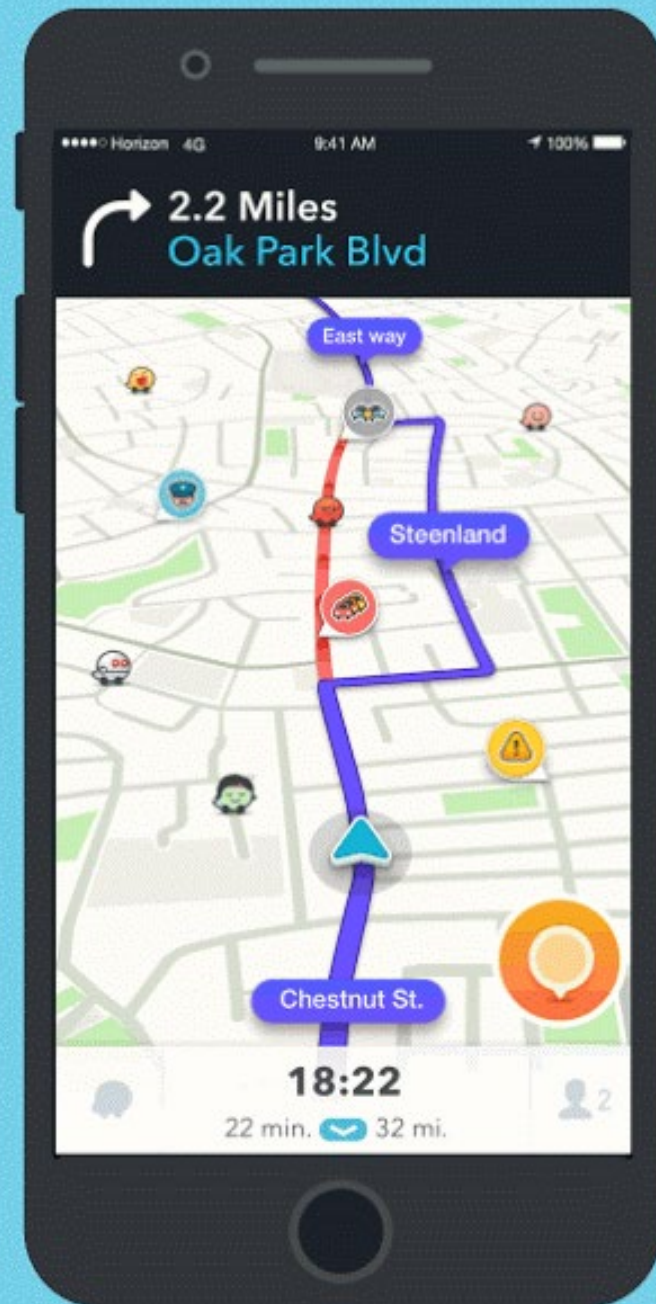
For Communities

Chicago communities need complete and accurate early childhood data in order to maximize and equitably drawdown additional city, state, and federal dollars

- City Hall is seeking to use CECIDS data to inform the early childhood allocations in the **2023 city budget**.
- The Governor's office for Early Childhood has projected the need for \$12B annually for early childhood across the state.
- Whether through competitive grants or large-scale legislation, there may be **opportunities for additional federal funds**, if Chicago is prepared.

* These numbers based on pre-pandemic 2019 ISBE reporting.

CECIDS is not
just a 'data
warehouse,'
but a **smart,
new reality**



CECIDS Executive Committee



CECIDS Technical Infrastructure *NIU as Technical Administrator*

DATA GOVERNORS TIER



**INCCRRA –
Birth to Five Illinois**



CPS



DFSS



Head Start
(1 as Co-chair)

**3rd Co-Chair elected from full membership*

Identification of Head Start programs is representative; more than 5 may participate

DATA GOVERNORS CONSULT

STAKEHOLDERS TIER



IDHS



ISBE



GOECD



CHICAGO COUNCIL MANAGER



IAFC
(SDA 6 CCR&R)



PRIVATE CARE REP



FFN REP



CDPH



CITY
(Co-chair)



RPC AT-LARGE



RPC AT-LARGE
(Parent)



RPC AT-LARGE
(Research)



RPC AT-LARGE
(Philanthropy)

2022 CECIDS Timeline



WINTER



SPRING

SUMMER

FALL

Legal Agreements executed

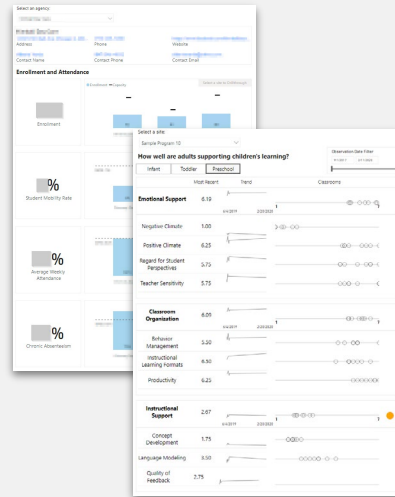
Identify and ingest data into secure NIU cloud DW

Install existing 3Si code

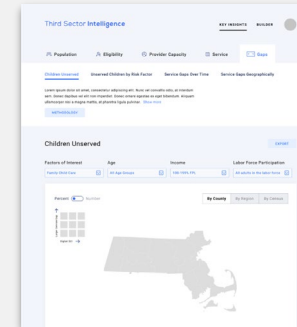
Preview initial data tools

Inform stakeholder engagement plan with those data tools

Operational dashboards turn on



Citywide views become available



Conduct follow-up series to inform next generation of data tools

Begin refining data tools based on stakeholder feedback

CECIDS initial data products
(contingent on data availability)



Q&A

Next Steps & How to Get Involved

- Complete an Interest Form
 - Action Council – [Google Form](#)
 - Family Council – Coming soon!
- Apply now!
 - [Regional Action Council Manager – City of Chicago](#)
- **Workforce Survey** - To better understand compensation rates in the early education sector, we're surveying early education providers about your wages and benefits. Center directors or human resource staff, teaching staff, and home-based providers are the intended respondents for this survey. If you are in one of these roles, **please take a moment [to complete the survey](#) by April 8.**

Resources & Information

- Check out the Chicago-specific FAQs:
 - <https://www.birthtofiveil.com/faqs/#chicago>
 - <https://www.birthtofiveil.com/preguntas/#chicago>
- Visit our websites:
 - www.birthtofiveil.com
 - <https://www.birthtofiveil.com/inicio>
 - [Every Child Ready Chicago](#)
- Funding opportunity launching in Spring 2022



Thank you!

